

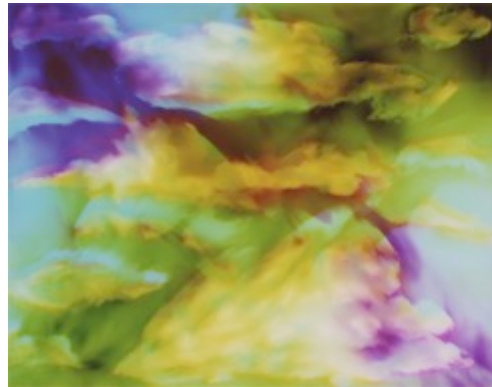
Artwork by Natasha Bacca

SKYSCAPES

In line with my one of a kind artwork, I choose nature as an analogous subject as all elements of nature are unique. With no two clouds, trees, flowers, or other natural elements ever being exactly alike, I bring to light the intricate textures and details of my subjects, giving attention and appreciation to every aspect through careful arrangement and layering. I engage the notion of exceptional nature as a mirror of exceptional human nature, using nature as a catalyst to explore concepts of life and healing. I use clouds as peaceful symbols of life. Clouds illustrate the passage of time. These skiescapes exhibit a transitory beauty, an ephemeral symbol of the cycle of life, reminding viewers that life is meaningful and sacred.



S2



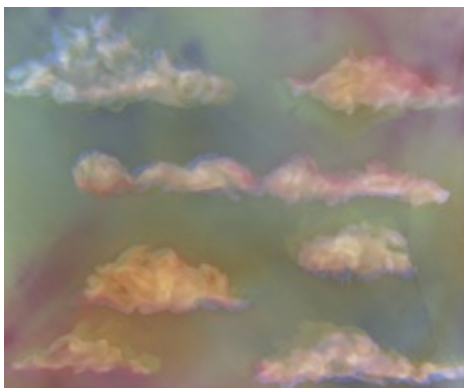
S48



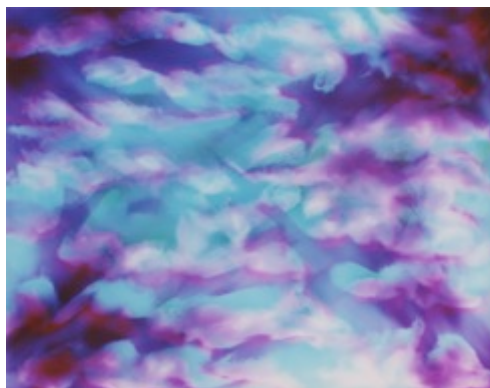
S44



S47



S43



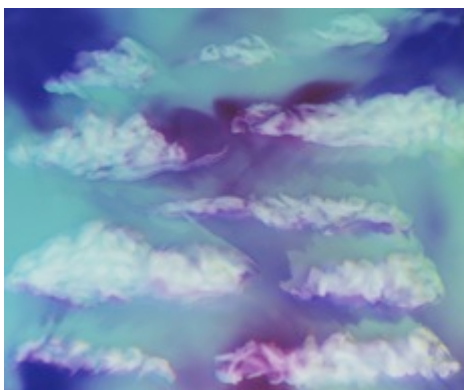
S46



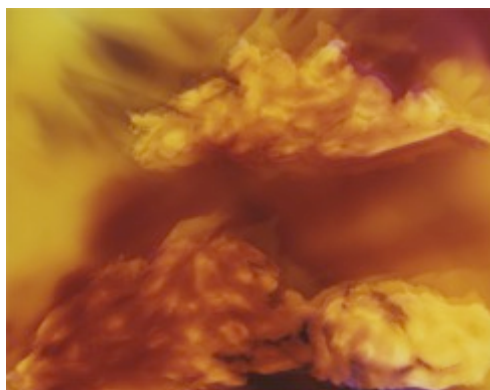
S45



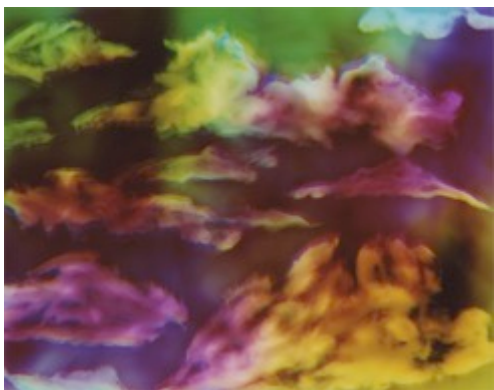
S41



S40



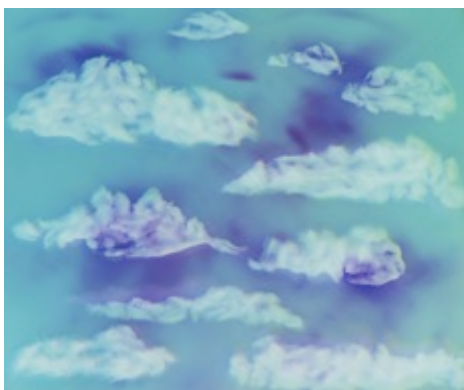
S42



S37



S39



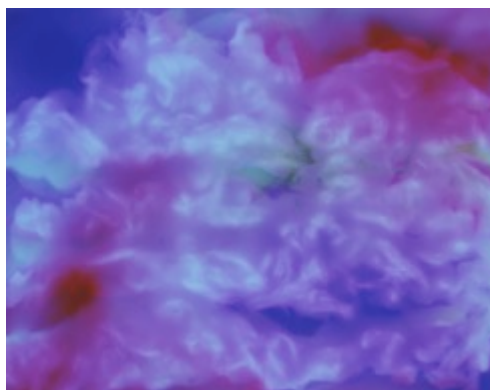
S17



S38



S33



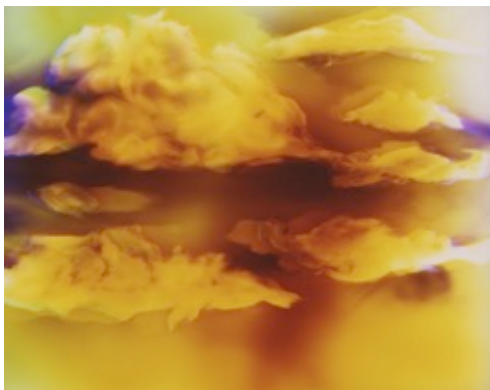
S35



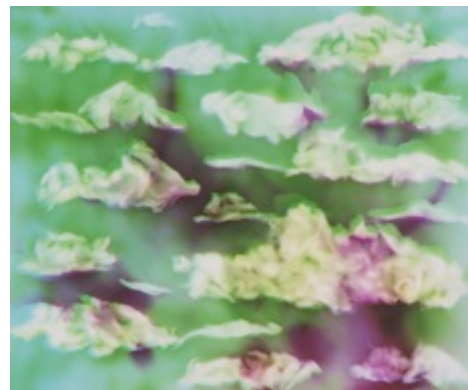
S34



S32



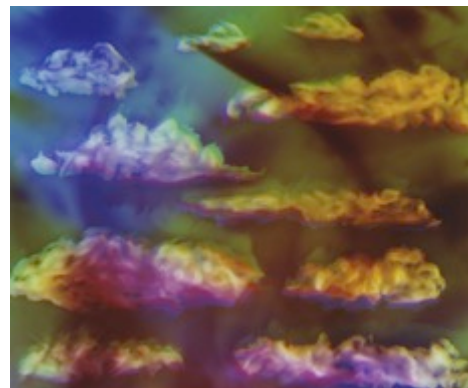
S36



S30



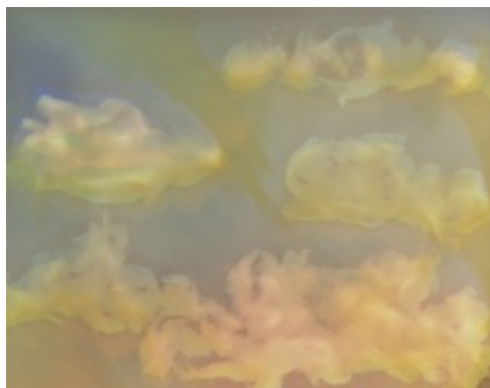
S31



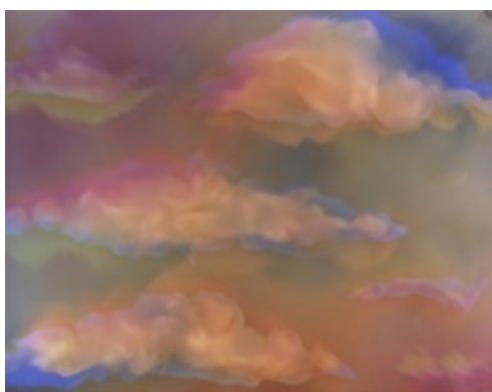
S29



S19



S28



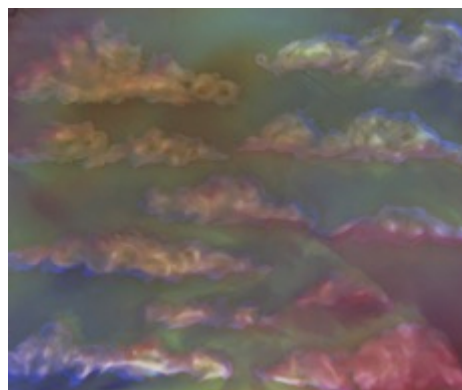
S27



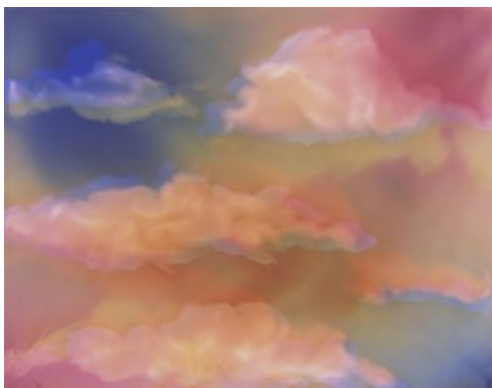
S26



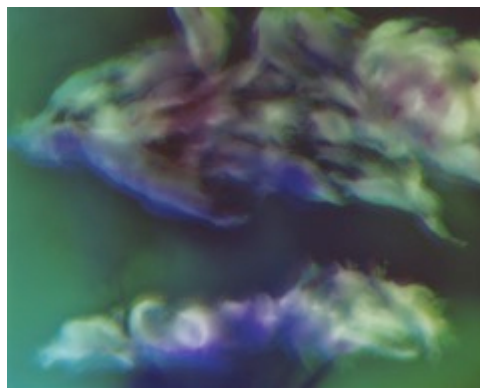
S24



S25



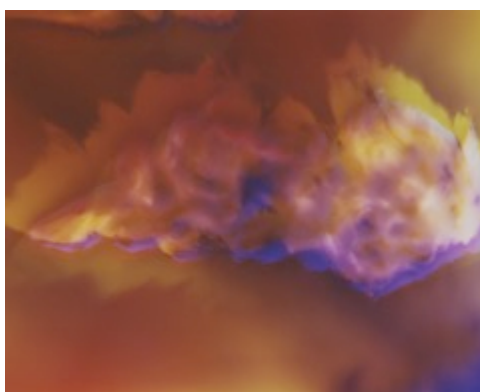
S23



S21



S20



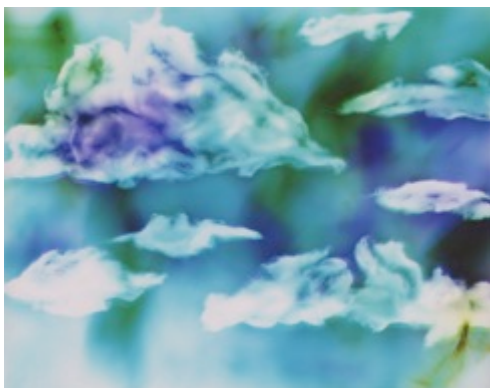
S22



S18



S15



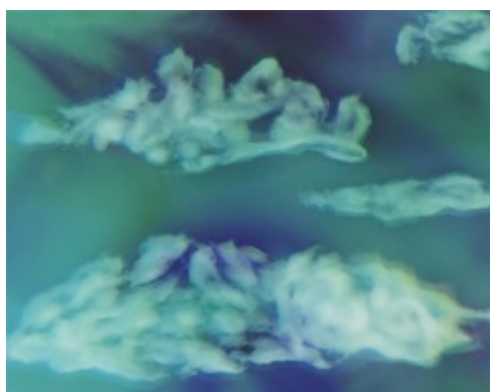
S14



S16



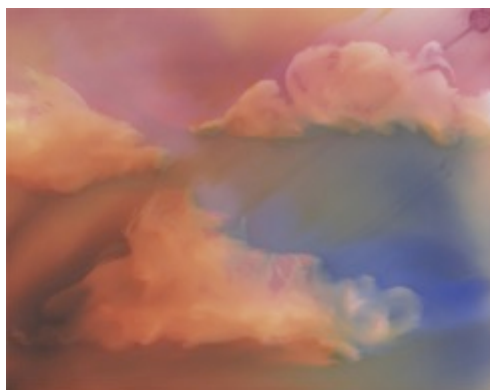
S13



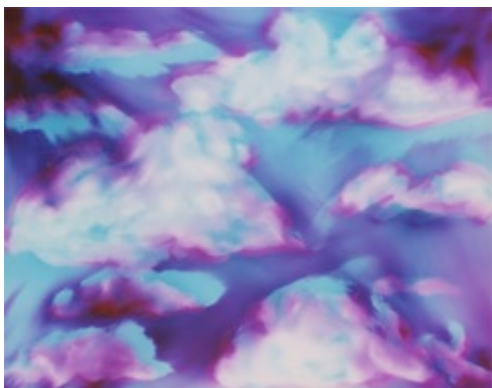
S12



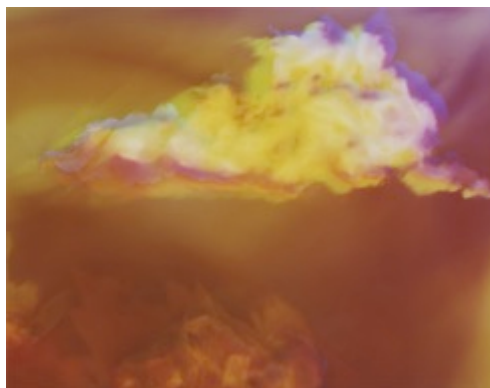
S10



S11



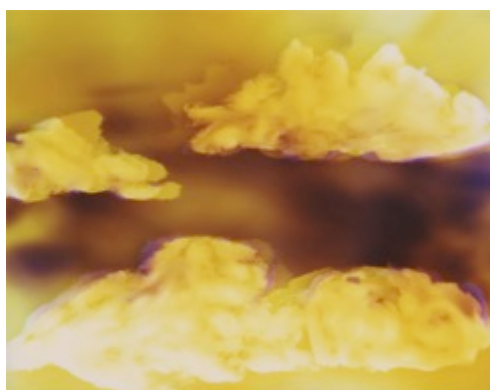
S9



S5



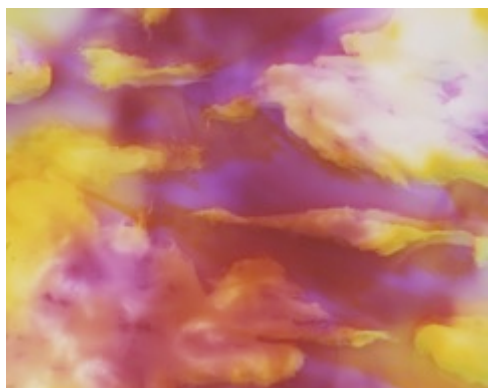
S7



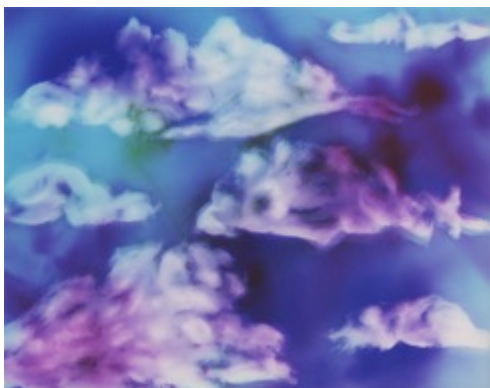
S6



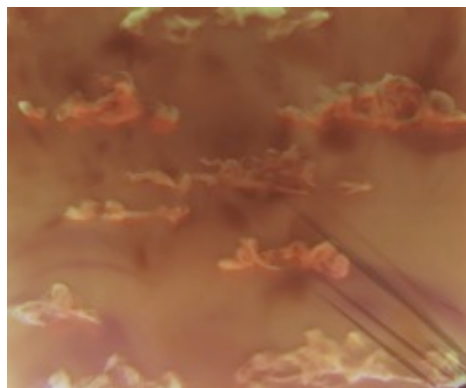
S4



S3



S8



S1